

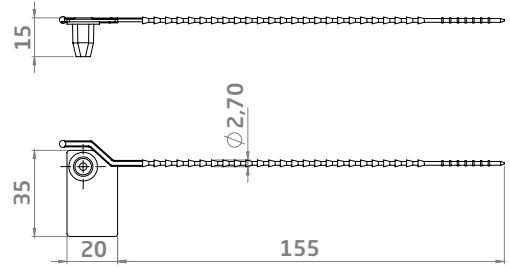
# LGM 540

Pull-up Seal with Plastic Insert



## Applications

Fire Extinguishers, Trolleys, Textile



## Product Description

- Two material options; Polyamide (PA) and PolyPropylene (PP)
- Acetal (POM) insert fixed with heat staking technic
- Polyamide (PA) production for improved tensile strength, item code: GP540N
- Company logo and consecutive numbering on the flag only with Laser Printing

- Limited barcode option for mobile applications (Int 2/5 or Code 128)
- Tear-off feature for easy hand removal as standart
- Shipped in mats of 10 pieces
- Pull-apart strength: 10 Kgf (PP), 15 Kgf (PA)
- Working temperature: -20°C / +80°C for PP, -40°C / +80°C for PA

Product Description	LGM540	LGM540-N
Quantity	1.000 pcs	1.000 pcs
Box Dimensions	24x25x42 cm	24x25x42 cm
Box Weight	2,20 kg	2,54 kg
Pallet Info	101x126x225 cm, 100.000 pcs	101x126x225 cm ,100.000 pcs

## Color Options

Please contact our sales team for different colors



WHITE PASTEL GREEN GREEN PASTEL BLUE BLUE PASTEL YELLOW YELLOW PASTEL RED RED ORANGE