

LGM 415

Pull-up Seal With Metal Insert

Applications

Trucks, Cash and Postal Bags

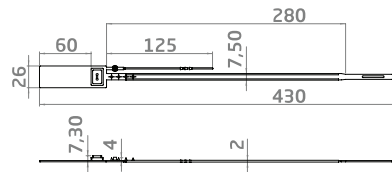
LGM 415



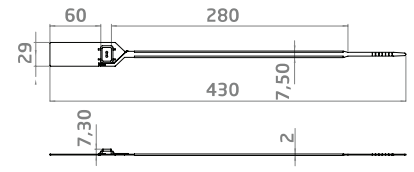
LGM 415-T



LGM415



LGM415-T



Product Description

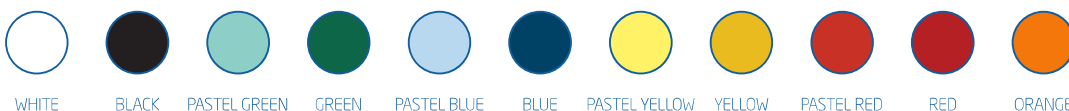
- Made of Polypropylene (PP) body
- Stainless steel insert for enhanced security with ultrasonic welded assembly
- Label-holder to carry cardboard or plastic labels is standart on item code LGM415
- Tear-off option for easy hand removal available on item codes LGM415-T
- LGM415 is always with prongs to provide better strapping grip for Mail Bags

- LGM415 -T with Tear-off is always without prongs
- Company logo and consecutive numbering on the flag
- Laser, hot stamp and digital thermal printing options
- Barcode option for mobile applications (Code128, Int 2/5, etc.)
- Shipped in mats of 8 pieces
- Pull-apart strength: 40 Kgf
- Working temperature: -20°C / +80°C

Product Description	LGM-415
Quantity	1.000 pcs
Box Dimensions	25x46x37 cm
Box Weight	7,01 kg
Pallet Info	104x120x240 cm, 60.000 pcs

Color Options

Please contact our sales team for different colors



RECYCLED SEAL

LiMA