

# LGM 412

## Pull-Up Seal with Metal Insert

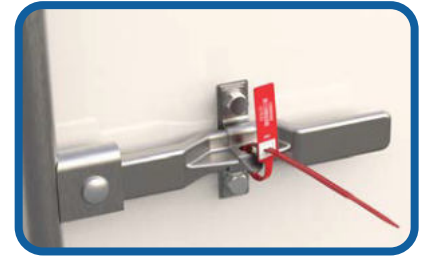
## Applications

Trucks, Toteboxes, Cash and Postal Bags

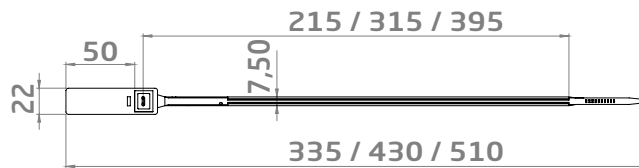
LGM 412-S



LGM 412-L



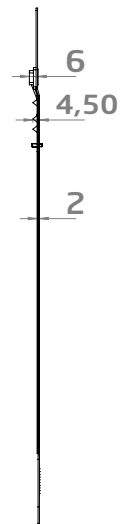
LGM 412-XL



## Product Description

- Made of Polypropylene (PP) body
- Stainless steel insert for enhanced security with ultrasonic welded assembly
- Company logo and consecutive numbering on the flag
- Laser, hot stamp and digital thermal printing options
- Barcode option for mobile applications (Code128, Int 2/5, etc.)
- Optional 3 lengths: GP412-S: 335 mm and LGM412-L: 430 mm LGM412-XL: 510 mm

- Tear-off option for easy hand removal available only on item codes LGM412-LT and LGM412-XLT
- Optional with/without prongs available only on LGM412-S, other models are always with prongs to provide a better strapping
- Optional 20 mm longer marking area available for item code LGM412-LF
- Shipped in mats of 10 pieces
- Pull-apart strength: 40 Kgf
- Working temperature: -20°C / +80°C



Product Description	LGM412-S	LGM412-L	LGM412-XL
Quantity	1.000 pcs	1.000 pcs	1.000 pcs
Box Dimensions	25x35x26 cm	24x48x26 cm	25x54x27 cm
Box Weight	4,54 kg	5,95 kg	6,83kg
Pallet Info	103x125x250 cm, 117.000 pcs	100x123x250 cm, 90.000 pcs	103x125x260 cm, 72.000 pcs

## Color Options

Please contact our sales team for different colors

